



Λ - TEKU



The Painted Metal Atelier

A-TEKU



The application of our many years of know-how in the world of pre-painted metals allows us to best satisfy the creative needs of **architecture** and **design** projects.

A-Teku is our **Premium Collection** product inspired by antique copper.

Copper is a historical material with formal, structural, and plastic properties that are still exploited in contemporary art, architecture, design, and technology.

A-Teku is able to create a realistic material effect on application surfaces due to the chromatic effects of genuine chemical oxidation of copper and iron.

The result is a striking visual impression of metals abandoned to the erosive action of weathering. At first sight they resemble the typical relief patterns of orographic maps.

A-Teku helps our **pre-painted metal Atelier** to fulfil any design concepts.



- > **Support:**
aluminium, steel
- > **Guarantee:**
up to 20 years PVDF
- > **Applications:**
outdoor, tinsmithing

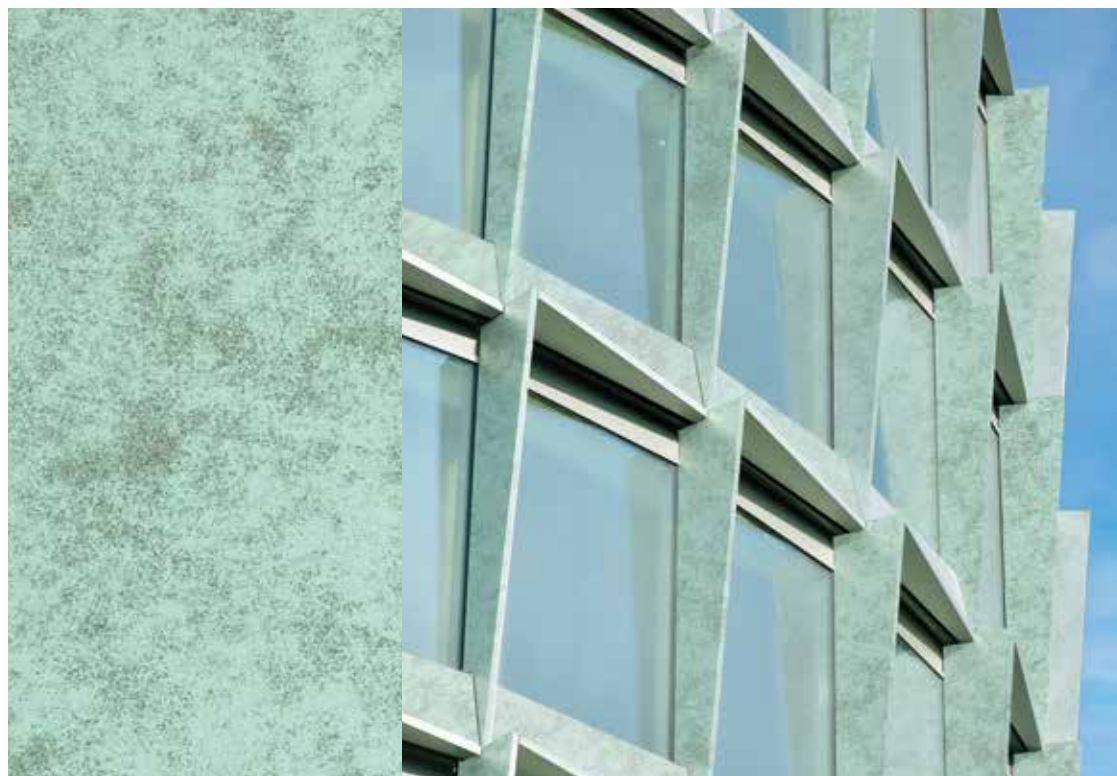


A-TEKU

A-Teku is the result of a special treatment using polyurethane paints specifically designed to make the coated materials look like antique copper.

The product is recommended for all **outdoor** uses (tinsmithing, cladding).
Since the pattern is created using multiple colours, it is not possible to guarantee any Delta E value, although different runs can certainly be used together.

It is made with **PVDF** and **guaranteed 20 years**.



Find out about our applications



TREATMENT

2 degreasings + chrome-free passivation

TOP SURFACE

BASE: PUR green 9 - 11 microns
INK: 1 - 2 microns
TOP TRASPARENT:
PU 9 - 11 microns

BACK SURFACE

BACK COAT: 4 - 6 microns
or MONOCOUCHE
14 - 16 microns

UV Radiation Resistance
Category: Ruv2
Coating used: compliant with
RoHS Directive

Technical Features

TEST	VALUE	REFERENCE STANDARD
Thickness	19 - 24 µm	EN 13523-1 (ECCA T1)
Gloss	5 ± 3	EN 13523-2 (ECCA T2)
Pencil hardness	F - H	EN 13523-4 (ECCA T4)
Adhesion on impact	100%	EN 13523-5 (ECCA T5)
Adhesion on forming	100%	EN 13523-6 (ECCA T6)
T.B. Adherence at 25° C	0T - 1T*	EN 13523-7 (ECCA T7)
T.B. Cracking at 25° C	0T - 2,5T*	EN 13523-7 (ECCA T7)
MEK	> 100	EN 13523-11 (ECCA T11)

* according to the characteristics of the support

Feasibility

Coil width	min. 500 mm · max. 1,320 mm
Coil thickness	min. 0.3 mm · max. 1.5 mm
External coil diameter	min. 700 mm · max. 1,300 mm
Internal coil diameter	508 mm; 610 mm
Strip width	min. 20 mm



Metalcoat

Plant

viale dei Mutilati e Invalidi del Lavoro, 263
63100 Ascoli Piceno
T +39 0736 249137

Sales office

via Antonio Stoppani, 10/C
24121 Bergamo
T +39 035 246509
info@metalcoat.it
www.metalcoat.it

Alusteel Coating

via Risorgimento, 19
26867 Somaglia, Lodi
T +39 0377 579700
info@alusteel.it
www.alusteel.it

Alpine Anodizing

via Friuli, 75
24055 Cologno al Serio, Bergamo
T +39 035 897128
info@alpineanodizing.it
www.alpineanodizing.it

Aleu - Aluminium Europe

piazza Francesco Buffoni, 5
21013 Gallarate, Varese
T +39 0331 1420010
info@aleu.it
www.aleu.it



The Painted Metal Atelier